



**Noble Marine RS500, RS700 and RS800
National Championships 2026
Wednesday 2nd to Sunday 6th September 2026
Hosted by Royal Torbay Yacht Club**

NOTICE OF RACE

ORGANISING AUTHORITY (OA)

This event will be organised by the Royal Torbay Yacht Club in conjunction with the RS Class Association.

The notation '[NP]' in a rule of the notice of race (NoR) means that a boat may not protest another boat for breaking that rule. This changes RRS 60.1.

1. RULES

- 1.1 The event is governed by the rules as defined in *The Racing Rules of Sailing*.
- 1.2 Racing rules Race Signals AP, 31, 33, 34, 35, 40.1, 40.2(c), 44.1, 60.1, 60.3(b), 61.1(a), 61.2(b), 61.4(b)(1), A2, A5.1 and A5.2 will be changed. The changes appear, in full, in this notice of race or in the sailing instructions. The sailing instructions may also change other racing rules

2 SAILING INSTRUCTIONS (SI's)

The sailing instructions will be available on the Official Noticeboard.

3 COMMUNICATION

- 3.1 The online official noticeboard is located at <https://rtyc.org/event/rs500-700-800-nationals/>
- 3.2 [DP] While racing, except in an emergency, a boat shall not make voice or data transmissions and shall not receive voice or data communication that is not available to all boats.

4 ELIGIBILITY AND ENTRY

- 4.1 The event is open to boats of the RS500, RS700 and RS 800 classes.
- 4.2 Helm must be a full member, and crew must be either a full member or crew member of the RS Class Association, except where the helm has an 'any crew' membership.
- 4.3 Eligible boats may enter by completing the online form at [here](#).
- 4.4 To be considered an entry at an event, a boat shall complete all registration requirements and pay all fees.
- 4.5 Any competitors aged under 18 shall complete an Under 18s Consent Form. This can be downloaded from the RS Class Association website and should be completed and submitted at registration.
- 4.6 Online entry will close on Monday 31 August. Paper entry will be available at registration. No paper entries will be accepted after 0930 on Thursday 3 September.

5 FEES

Entry fees are as follows:

Class	Early entry before 14 July 2026	Standard entry fee until 31 August 2026
RS500 Full	£260	£300
RS500 Youth	£250	£290
RS500 Weekend	£130	£150
RS700 Full	£200	£240
RS700 Youth	£190	£230
RS700 Weekend	£100	£120
RS800 Full	£260	£300
RS800 Spinlock & Youth	£250	£290
RS800 Weekend	£130	£150

On paper entry will be available at registration but will be subject to £10 late fee for full event and £5 late fee for weekend event.

Youth entry is aged 24 and under at the start of the championship. Youth entry for RS500 & RS800 requires the Helm and Crew both to be youth.

Spinlock 1999 entry is open to old-style deck RS800s with a sail number below 1118.

6 CREW LIMITATIONS

Does not apply.

7 ADVERTISING

[DP] [NP] Boats may be required to display advertising chosen and supplied by the organising authority.

8 QUALIFYING SERIES AND FINAL SERIES

Does not apply.

9 SCHEDULE

9.1 Registration - Wednesday 2nd September 12.00 to 18.00.

- Thursday 3rd September 09.00 to 10.30.

- Saturday 5th September 09.00 to 10.00 - Weekend entries only.

9.2 Briefing - A Briefing will be held at 10.30 on Thursday 3rd September - Corinthian Room RTYC.

9.3 Racing:

<i>Date</i>	<i>Races</i>	<i>1st Warning Signal</i>
Thursday 3 rd September	2 Races	12.55
Friday 4 th September	3 Races	11.55

Saturday 5 th September	3 Races	11.55
Sunday 6 th September	2 Races	10.55

- 9.4 Ten races are scheduled with up to four races on any one day.
- 9.5 On the last scheduled day of racing, no warning signal will be made after 14.00
- 9.6 The race committee may change the scheduled start time of races due to weather conditions or other causes. Any change to the first start time will be posted on the official notice board by 20:00 the evening before the affected races.

10 EQUIPMENT INSPECTION

- 10.1 Boats may be inspected at any time.
- 10.2 When Class Association-approved scales are provided at the event, competitors in classes with performance equalisation shall be measured in accordance with the Class Rules before racing in the event, but not more than 24 hours before the first scheduled start. The measurements and the corresponding rack and corrector weight settings shall be recorded on the form provided, available to view by all competitors, and will apply for the duration of the event. If a helm or crew is substituted during the event, the new sailor will be measured before racing and the boat's rack and corrector weight settings adjusted and recorded to suit

11 CLOTHING AND EQUIPMENT

RRS 40.1 and 40.2(c) shall apply at all times while afloat.

12 VENUE

The Sailing Area will be in Tor Bay (See Addendum 1)

13 COURSES

- 13.1 The courses to be sailed will be Windward Leeward or Trapezoid and described in the SI's.

14 PENALTY SYSTEM

- 14.1 RRS 44.1 is changed so that the Two-Turns Penalty is replaced by the One-Turn Penalty.
- 14.2 Appendix T (Arbitration) applies.

15 SCORING

- 15.1 Two races are required to be completed to constitute a series.
- 15.2 (a) When fewer than four races have been completed, a boat's series score will be the total of her race scores.
- (b) When from four to seven races have been completed, a boat's series score will be the total of her race scores excluding her worst score.
- (c) When from eight to ten races have been completed, a boat's series score will be the total of her race scores excluding her two worst scores.

This changes RRS A2.

16 [DP] [NP] SUPPORT PERSON VESSELS

- 16.1 [DP] No support vessels are allowed at this event.

17 CHARTERED OR LOANED BOATS

Does not apply.

18 BERTHING

[DP] Boats shall be kept in their assigned places in the dinghy park.

19 HAUL-OUT RESTRICTIONS

Does not apply.

20 DIVING EQUIPMENT AND PLASTIC POOLS

Does not apply.

21 DATA PROTECTION

The RTYC Data Privacy Policy can be found at <https://rtyc.org/privacy/>

The RS Class Association Data Processing Policy is available on the class website.

22 RISK STATEMENT

RRS 3 of the Racing Rules of Sailing states: “The responsibility for a boat’s decision to participate in a race or to continue to race is hers alone”.

Sailing by its nature is an unpredictable sport and therefore inherently involves an element of risk. By taking part in the event, each competitor agrees and acknowledges that:

- (a) They are aware of the inherent element of risk involved in the sport and accept responsibility for the exposure of themselves, their crew and their boat to such inherent risk whilst taking part in the event;
- (b) They are responsible for the safety of themselves, their crew, their boat and their other property whether afloat or ashore;
- (c) They accept responsibility for any injury, damage or loss to the extent caused by their own actions or omissions;
- (d) Their boat is in good order, equipped to sail in the event and they are fit to participate;
- (e) The provision of a race management team, patrol boats and other officials and volunteers by the event organiser does not relieve them of their own responsibilities;
- (f) The provision of patrol boat cover is limited to such assistance, particularly in extreme weather conditions as can be practically provided in the circumstances;
- (g) It is their responsibility to familiarise themselves with any risks specific to this venue or this event drawn to their attention in any rules or information produced for the venue or event and to attend any safety briefing held for the event.

23 INSURANCE

Each participating boat shall be insured with valid third-party liability insurance with a minimum cover of £3,000,000 Pounds Sterling per incident or the equivalent.

24 PRIZES

Prizes will be awarded, dependent on entry numbers and at the discretion of the organising authority, as follows.

RS500

- National Champion Helm and Crew
- 1st -4th Helm and Crew
- 1st Master Team (Combined age of 90 or older)
- 1st Youth Helm (24 or under at the start of the championship)
- 1st Youth Crew (24 or under at the start of the championship)
- 1st Junior Helm (18 or under at the start of the championship)
- 1st Junior Crew (18 or under at the start of the championship)

RS700

- National Champion
- 1st – 5th
- 1st Silver
- 1st Bronze
- 1st Master (over 50 at start of the Championship)
- 1st Youth (aged 24 or under at start of the Championship)
- Fidelis Trophy (1st helm outside main prizes who has competed in at least 3 previous RS700 nationals)
- 1st Apprentice (1st helm at their first RS700 nationals)
- Endeavour (highest score having completed all races)
- 1st Weekend (weekend entry boat with lowest total race score from races completed across Sat 5th Sept and Sun 6th Sept 2026)

RS800

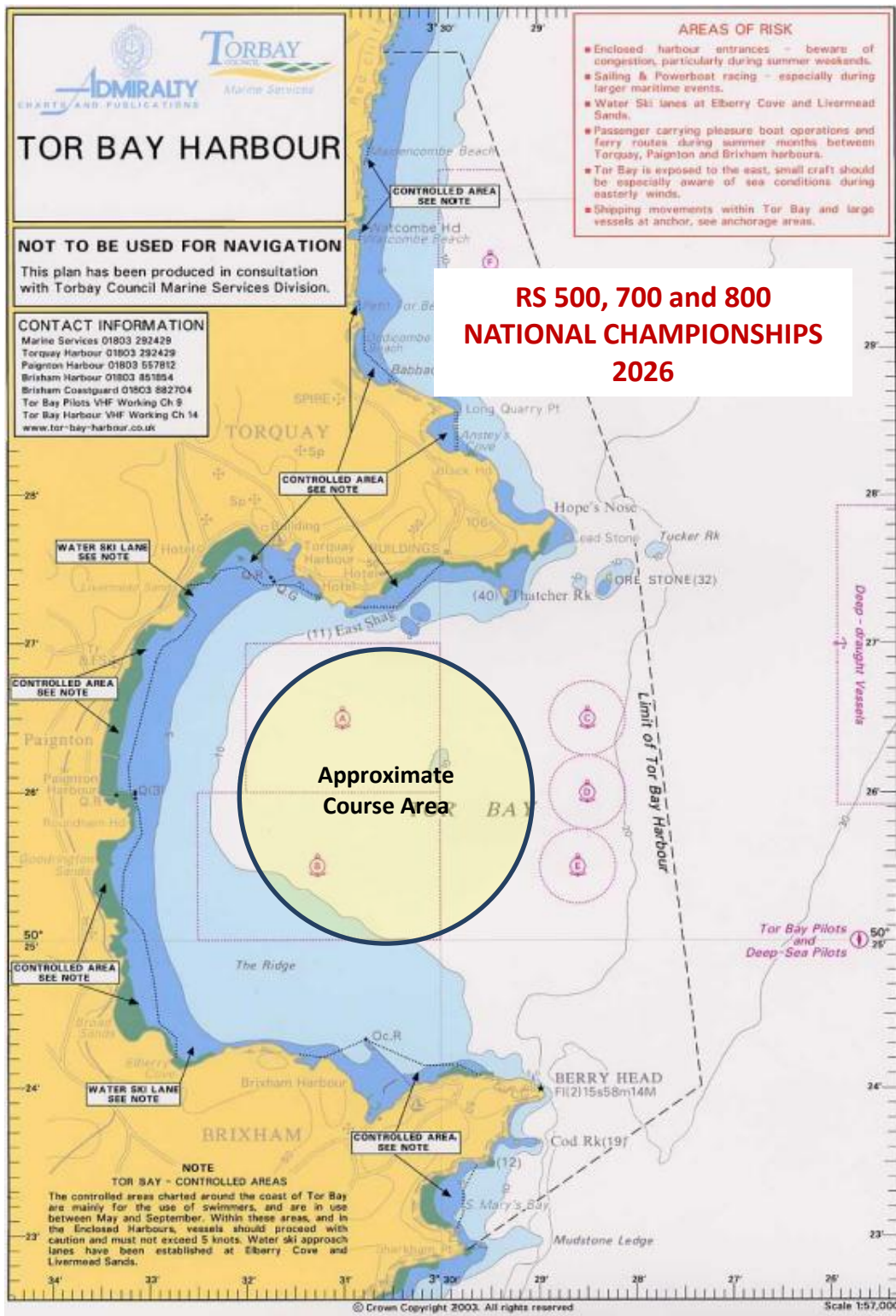
- National Champion Helm and Crew
- 1st – 4th Helm and Crew
- 1st Silver Helm and Crew
- 1st Lady Helm
- 1st Lady Crew
- 1st Youth Helm (aged 24 or under at start of the Championship)
- 1st Youth Crew (aged 24 or under at start of the Championship)
- 1st Master Helm (over 44 at start of the Championship)
- 1st Master Crew (over 44 at start of the Championship)
- Endeavour Helm and Crew (highest score having completed all races)
- Spinlock 1999 Award (best placed old-style deck RS800 with sail number lower than 1118)
- 1st Weekend Helm and Crew (weekend entry boat with lowest total race score from races completed across Sat 5th Sept and Sun 6th Sept 2026)

25 FURTHER INFORMATION

For further information, please contact events@rtyc.org or RS Class Secretary lizzie@re-association.com

END OF NOTICE OF RACE

ADDENDUM 1



OTHER EVENT AND VENUE INFORMATION



- **Post Code TQ1 2BG** - Please ensure you use postcode when travelling
- [Tor Bay Harbour - Home \(tor-bay-harbour.co.uk\)](http://tor-bay-harbour.co.uk)
- **Dinghy and Trailer Parking** on Haldon Pier subject to availability with additional parking for trailers at a secure location nearby.
- **Public Car Parking above Beacon Quay** for information and passes visit Beacon Quay - Torbay Council All cars must be moved to the public car park immediately after dropping of trailer or unloading.
- For **Accommodation and Camping** visit englishriviera.co.uk/accommodation
- **Royal Torbay Yacht Club** bar and restaurant will be open all day and evening throughout the event serving meals, bar snacks and refreshments. Detailed information, including menus will be published on the club event website.
- **Club Entry Access Code** – At registration competitors and their supporters will be given a door entry code to gain access to the club throughout the event. The front door must remain closed at all times, for security reasons.
- **Class Social Events** will take place in the Royal Torbay Yacht Club. Details and menus for all social events will be published on the class and club event websites. Additional tickets for family and friends will be available.
- **Club event website** - <https://rtyc.org/event/rs500-700-800-nationals/>