



**Volvo Noble Marine RS200 National Championship 2019**  
**Hosted by Royal Torbay Yacht Club**  
**04 to 09 August 2019**  
**(First Race 1300 5<sup>th</sup> August)**

Organising Authority Royal Torbay Yacht Club in conjunction with the  
UK RS 200 Class Association

## Sailing Instructions

## **RULES**

- 1.1 The regatta will be governed by the rules as defined in The Racing Rules of Sailing (RRS).

### **NOTICES TO COMPETITORS**

- 1.2 Notices to competitors will be posted on the Official Notice Board, situated in the Entrance Hall of the Royal Torbay Yacht Club (RTYC).
- 1.3 A Competitors Briefing will be held on Sunday 04 August at 1900 in the Corinthian Room RTYC. Subsequent briefings may be held and will be advised on the Official Notice Board.

### **CHANGES TO SAILING INSTRUCTIONS**

- 1.4 Any changes to the Sailing Instructions (SIs) will be posted for at least two hours before the scheduled start time of the race or races concerned; except that any change to the schedule of races shall be posted by 2000hrs on the day before it will take effect.

### **SIGNALS MADE ASHORE**

- 1.5 Signals made ashore will be displayed on the flagpole situated at the base of Haldon Pier, Torquay Harbour.
- 1.6 Boats shall not go afloat until released. Release will be notified by flying IC flag 'R'.
- 1.7 When IC flag 'AP' is displayed ashore, '1 minute', in 'Race Signals' is replaced with 'not less than 60 minutes'. This changes the meaning of AP in RRS Race Signals.

### **SCHEDULE**

- 1.8

Dates of registration and racing	Registration times	Number of races	First scheduled warning signal
Sunday 04 Aug	1300 - 1800		
Monday 05 Aug	0830 - 1100	2	1300
Tuesday 06 Aug		2	1200
Wednesday 07 Aug		2	1200
Thursday 08 Aug		2	1200
Friday 09 Aug		2	1200

One extra race per day may be sailed, provided that the class becomes no more than one race ahead of schedule, and the change is made in accordance with SI 3.1. No more than 3 races will be sailed in any one day.

- 1.9 The warning signal for the first scheduled race on Monday 05 will be at 1300 hrs. On subsequent days the warning signal for the first scheduled race will be at 1200 hrs.
- 1.10 On the last day of racing no warning signal will be made after 1630 hrs.
- 1.11 In the event of a race being recalled, restarted, re-sailed or abandoned the next race sailed will be that race with subsequent races being sailed thereafter in their scheduled order.

### **CLASS FLAGS**

- 1.12 The class flag will be the RS200 Class Flag, yellow with black RS200.

### **RACING AREA**

- 1.13 The racing area will be in the waters of Torbay.

### **THE COURSES**

- 1.14 The diagrams in Appendix C show the courses, including the order in which marks are to be passed, and the side on which each mark is to be left.
- 1.15 The number of laps to be sailed will be indicated on the Committee Boat either written on a notice board or by flying the appropriate numeral pennant.
- 1.16 If one of two gate marks is missing and has not been replaced as described in RRS 34, then the remaining mark shall be rounded to port. This changes RRS 34.
- 1.17 The approximate bearing of the windward mark may be displayed on the committee boat prior to the warning signal.

### **MARKS**

- 1.18 The course marks are described in Appendix C of these SIs.

### **THE START**

- 1.19 The Gate Start is described in Appendix B.
- 1.20 The Race Committee will choose to use a gate start. IC flag 'G' will be flown from the Committee Boat and Appendix B to these SIs will apply. This changes RRS 26.

### **MINIMUM WIND STRENGTH**

- 1.21 Races will not be started unless the Race Officer is satisfied that the wind strength over the whole of the course is in excess of 4 knots.

### **CHANGE OF NEXT LEG OF THE COURSE**

- 1.22 To change the next leg of the course, the race committee will lay a new mark (yellow inflatable buoy), (or move the finish line) and remove the original mark as soon as practicable. When in a subsequent change a new mark is replaced, it will be replaced by the original mark.

### **SHORTENING COURSES**

- 1.23 The race may be shortened in accordance with RRS 32.2. All competitors shall complete the number of rounds equal to the leading boat before proceeding to the finish.

### **THE FINISH**

- 1.24 The finish line will be between a staff displaying a blue flag on the committee boat and the finishing mark or boat displaying a blue flag.

## **PENALTY SYSTEM**

- 1.25 For the RS200, the penalty for hitting marks is one-turn. For all other infringements, the penalty is two-turns.

## **TIME LIMITS**

- 1.26 The time limit shall be 90 minutes from the valid start for the first boat that sails the course and finishes. If one boat finishes within that limit then the time limit will be amended to 20 minutes after the finishing time of the first boat. Boats failing to finish within the amended time limit shall be scored in their observed positions on the course. This changes RRS 35, A4 and A5. Boats finished in this way will be advised of the fact by a safety boat and should stop racing thereafter. The target time for each race is 50 minutes.

## **PROTESTS AND REQUESTS FOR REDRESS**

- 1.27 Protest forms will be available from the Race Office. They shall be delivered there within the protest time limit.
- 1.28 The protest time limit is 90 minutes after the last boat has finished the last race of the day or the race committee signals no more racing today, whichever is later.
- 1.29 Notices will be posted within 30 minutes of the expiry of the protest time to inform competitors of hearings in which they are parties to, or named as witnesses. It shall be the responsibility of competitors to check the notice board for such notices, obtain their copy of the protest form and make sure that they and their witnesses attend the hearing.
- 1.30 Where a Class judge a NJ, IJ or official arbitrator is appointed to an event the Exoneration Penalty and the Advisory Hearing and RYA Arbitration procedures of the RYA Rules Disputes Procedures will be available. See official notice board for details.
- 1.31 For infringements of the rules other than in Parts 1 and 2 of the RRS, the protest committee may award a lesser penalty than disqualification.
- 1.32 Breaches of instructions 19.2, 22.1, 22.2 and 26 will not be grounds for a protest by a boat. This changes rule 60.1(a).

## **SCORING SYSTEM**

- 1.33 Points will accrue to the helm and crew team named on the entry form and not the boat entered.
- 1.34 (a) Three races are required to be completed to constitute the series.
- (b) When fewer than 4 races have been completed, a competitor's series score will be the total of her race scores.
- (c) When from 4 -7 races have been completed, a competitor's series score will be the total of her race scores excluding her worst score.
- (d) When 8 or more races have been completed, a competitor's series score will be the total of her race scores excluding her two worst scores.

To request correction of an alleged error in posted race or series results, a competitor may complete a scoring enquiry form available at the race office. If a request for correction is

rejected the time limit for requesting redress for the alleged error will run from the time that the rejection is advised to the competitor.

- 1.35 Series/event tie:** If, after discard, two or more competitors have the same points total the tie will be broken in accordance with RRS Appendix A8.1.

### **SAFETY REGULATIONS**

- 1.36 Personal Flotation Devices (PFD's) for crew members shall be worn at all times whilst afloat without flag Y having been displayed. PFD's may be removed briefly whilst adjusting clothing. This changes RRS 40.
- 1.37 A tally system will be used. Tallies will be issued from the head of the slip once Flag R is raised. Tallies must be returned as soon as a boat reaches the top of the slip.
- 1.38 When the race committee considers that a boat or competitor is in difficulty it may instruct the boat or competitor to accept outside help, retire or sail ashore.
- 1.39 In accordance with RRS 43.1 and WS Case 89, no clothing or equipment may be worn on the body of helm or crew to carry liquid of any description, even if for the purpose of re-hydration; this includes camelbacks, water bottles and cans of drink.

### **REPLACEMENT OF CREW OR EQUIPMENT**

- 1.40 For the event only the helm and crew team named on the entry form will be eligible. If a different helm and crew team completes a race in the same boat then they will be considered a separate entry and their results cannot be combined with another helm's results.
- 1.41 The registered helm and crew may swap roles without restriction. Any such swaps will affect eligibility for some Prize Categories.
- 1.42 Crews may only be changed during the series of races comprising an event from the person named on entry form with written permission in advance from the Race Committee or Class Representative. If it is known at the start of the event that there will have to be a crew change during the event then both crews should be registered on entry form along with which day(s) they will be sailing.
- 1.43 **Distinguishing Numbers.** Under exceptional circumstances, the Race Committee may permit a boat to use sails carrying a distinguishing number other than that required by RRS77 and RRS Appendix G. Such permission is only valid if sought in writing and granted at least 2 hours before the advertised start of that day's racing.

### **EQUIPMENT AND MEASUREMENT CHECKS**

- 1.44 A boat or equipment may be inspected at any time for compliance with the class rules and sailing instructions.
- 1.45 On RS200 only, the use of a pole to control the clew of the spinnaker is not permitted and the spinnaker may not be flown in a goose-winged fashion on the opposite side to the mainsail.

### **ADVERTISING**

- 1.46 Boats shall display advertising supplied by the organizing authority as specified in the NOR.

- 1.47 When provided at registration, competitors shall make every reasonable effort to display event sponsors promotional items on their boat and sails as directed. If sponsor promotional items come off whilst racing, competitors must obtain replacement items from the RS Association before the start of racing the following day, if the Association has sufficient stocks available.
- 1.48 There will be no restriction on the number or coverage of advertisers logos or slogans except for the front 20% of the forward part of each side of the hull and the foremost 20% of the mainsail boom bottom , which are reserved for RS Association event sponsors. [see ISAF regulation 20 Advertising Code]
- 1.49 Any individual caught stealing sponsor promotional items, e.g. flags, banners, prizes, etc. shall be the subject of a report by the Race Committee to the Protest Committee requesting action under RRS 69.2(a).

### **RADIO COMMUNICATIONS**

A boat shall neither make nor receive radio transmissions, text messages or cellular phone calls while racing except in an emergency or when using equipment provided by the race committee.

### **SUPPORT BOATS**

- 1.50 Support boats shall be registered with the organizing authority and will be required to comply with event support boat regulations.
- 1.51 All support boats shall clearly display a yellow flag supplied by the OA at all times while afloat.
- 1.52 Support persons as defined in the RRS shall stay outside areas where boats are racing from the time of the starting sequence until all boats have finished or the race committee signals a postponement, general recall or abandonment.

### **DISCLAIMER OF LIABILITY**

- 1.53 The race organisers shall not be responsible for any loss, damage, death or personal injury howsoever caused to the owner/competitor, his skipper or crew as a result of their taking part in the race or races. Moreover, every owner/competitor warrants the suitability of his boat for the race or races.
- 1.54 The safety of a boat and her entire management including insurance shall be the sole responsibility of the owner/competitor racing the boat, who shall ensure that the boat is fully found, thoroughly seaworthy and manned by a crew sufficient in number and experience who are physically fit to face bad weather. The owner/competitor shall be satisfied as to the soundness of the hull, spars, rigging, sails and all gear. He shall ensure that all safety equipment is properly maintained, stowed and in date and that all crew know where it is kept and how it is to be used.
- 1.56 Neither the establishment of these Sailing Instructions nor any inspection of the boat under these conditions in any way limits or reduces the absolute responsibility of the owner/competitor for his crew, the boat and the management thereof. The crews are nonetheless advised to satisfy themselves as to the experience of the skipper and the adequacy of all safety equipment and insurance arrangements.

### **TRASH DISPOSAL**

1.57 Competitors and their support persons shall not drop trash in the dinghy park or on the water.

### **INSURANCE**

1.58 Each participating boat shall be adequately insured with valid third-party liability insurance.

### **RIGHTS TO USE NAME AND LIKENESS**

1.59 By participating in this event, competitors automatically grant to the organizing authority and the event sponsors the right, in perpetuity, to make, use, and show, at their discretion, any photography, audio and video recordings, and other reproductions of them made at the venue or on the water from the time of their arrival at the venue, until their final departure, without compensation.

### **PRIZES**

1.60 The prizes are allocated as follows:

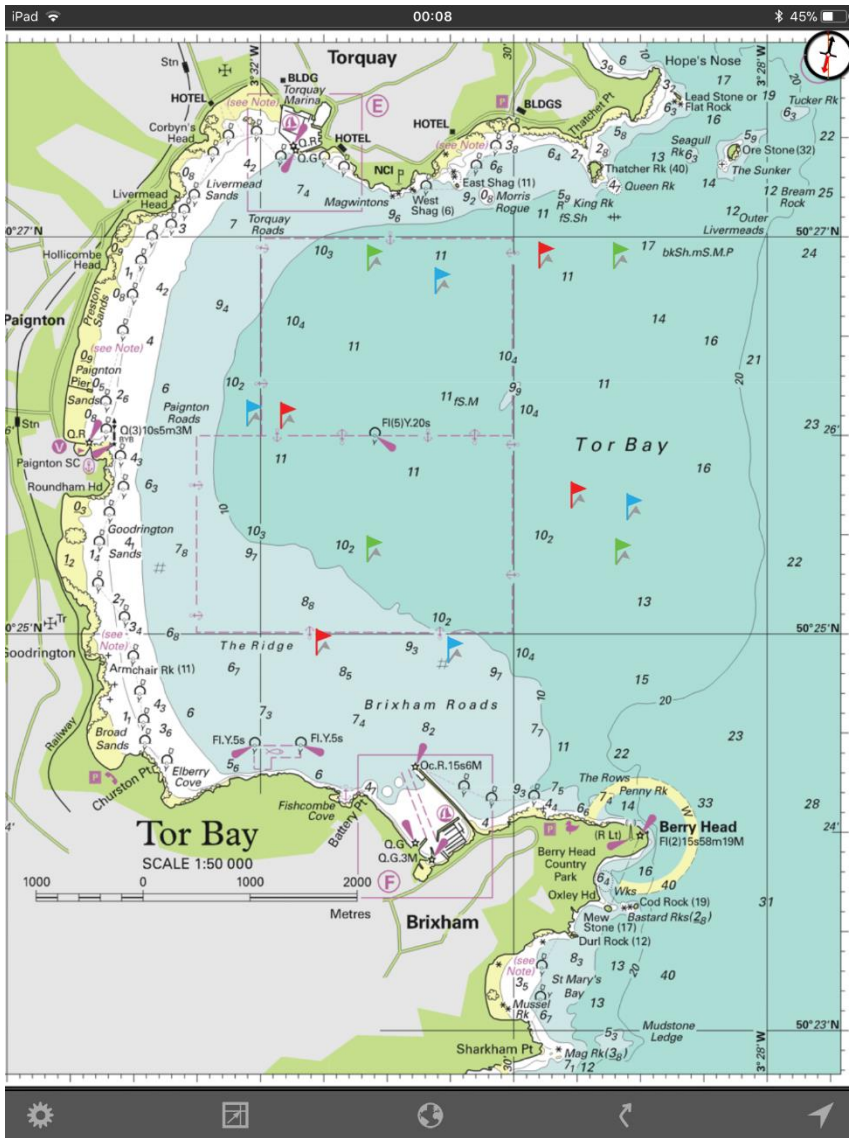
- Top 10 places overall.
- Silver division 1st 3 places.
- Bronze division 1st 3 places.
- 1st Lady Helm
- 1st Lady Team
- 1st Master Helm (45 or older at start of championship).
- 1st Grandmaster boat.
- 1st Youth Helm (22 or under at start of championship).
- 1st Youth Team (22 or under at start of championship).
- 1st Youth Crew (22 or under at start of championship).
- 1st Junior Team (18 or under at start of championship).
- 1st Junior Helm (18 or under at start of championship).
- 1st Junior Crew (18 or under at start of championship).
- Loving Cup (1st couple)
- 1st Family (parent and child).
- Top Club (best placed 3 boats from any one club - first named club on entry only).
- Top Uni (best placed 3 boats from any one Uni - first named Uni on entry only).
- Top Buddy Group (best placed 3 boats from 1 buddy group).

The start of championship is the Warning Signal on Monday 5th August.

### **USE OF DRONES**

1.61 Event drones (UAVs/UASs) may be used in close proximity to obtain media for an event. This may be on land and/or over water. Any material gained from their use can be used by the event team or sponsors for PR and Media purposes.

# Appendix A Torbay Chart





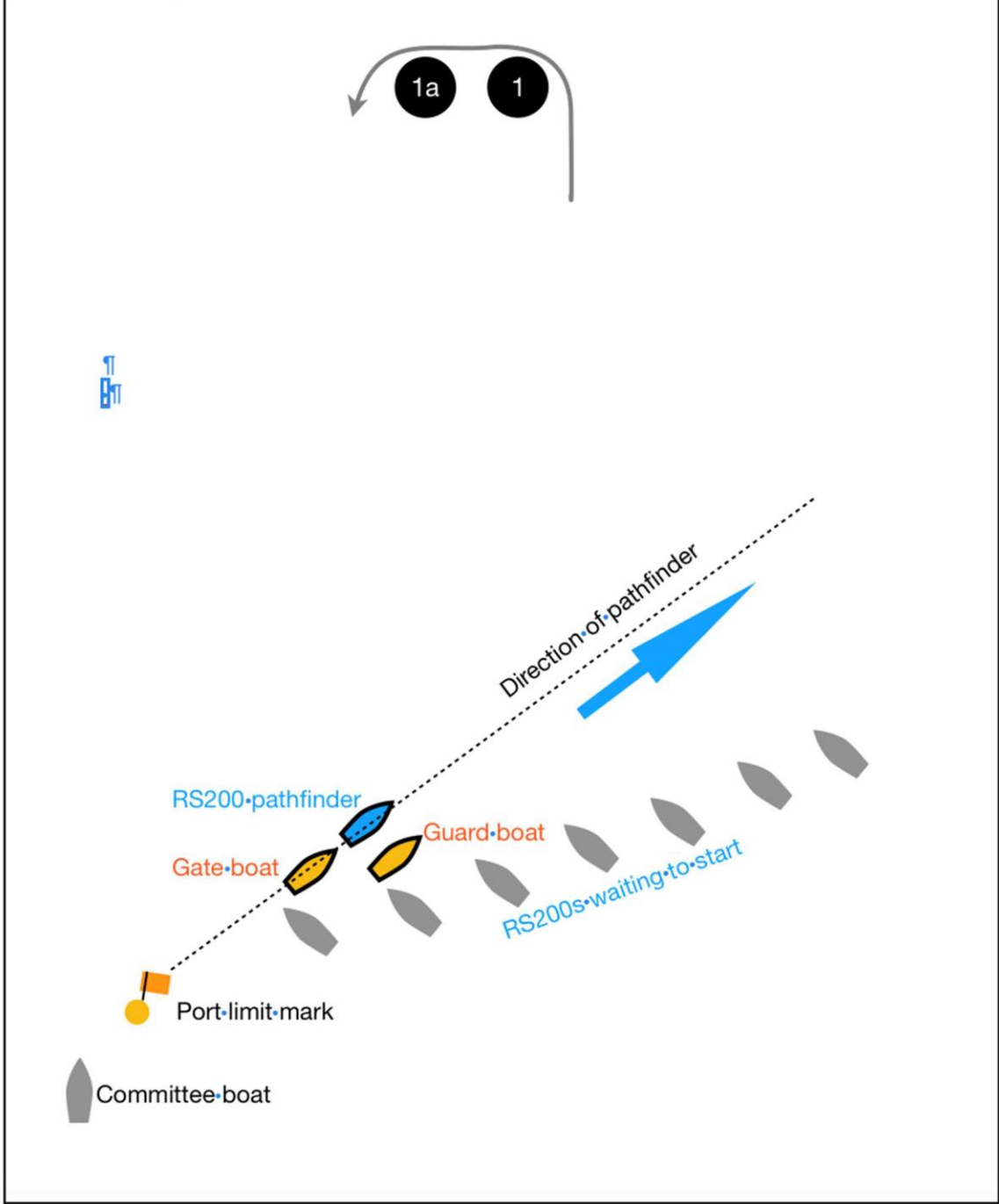
## Appendix B - Gate Start Instructions

### Gate start

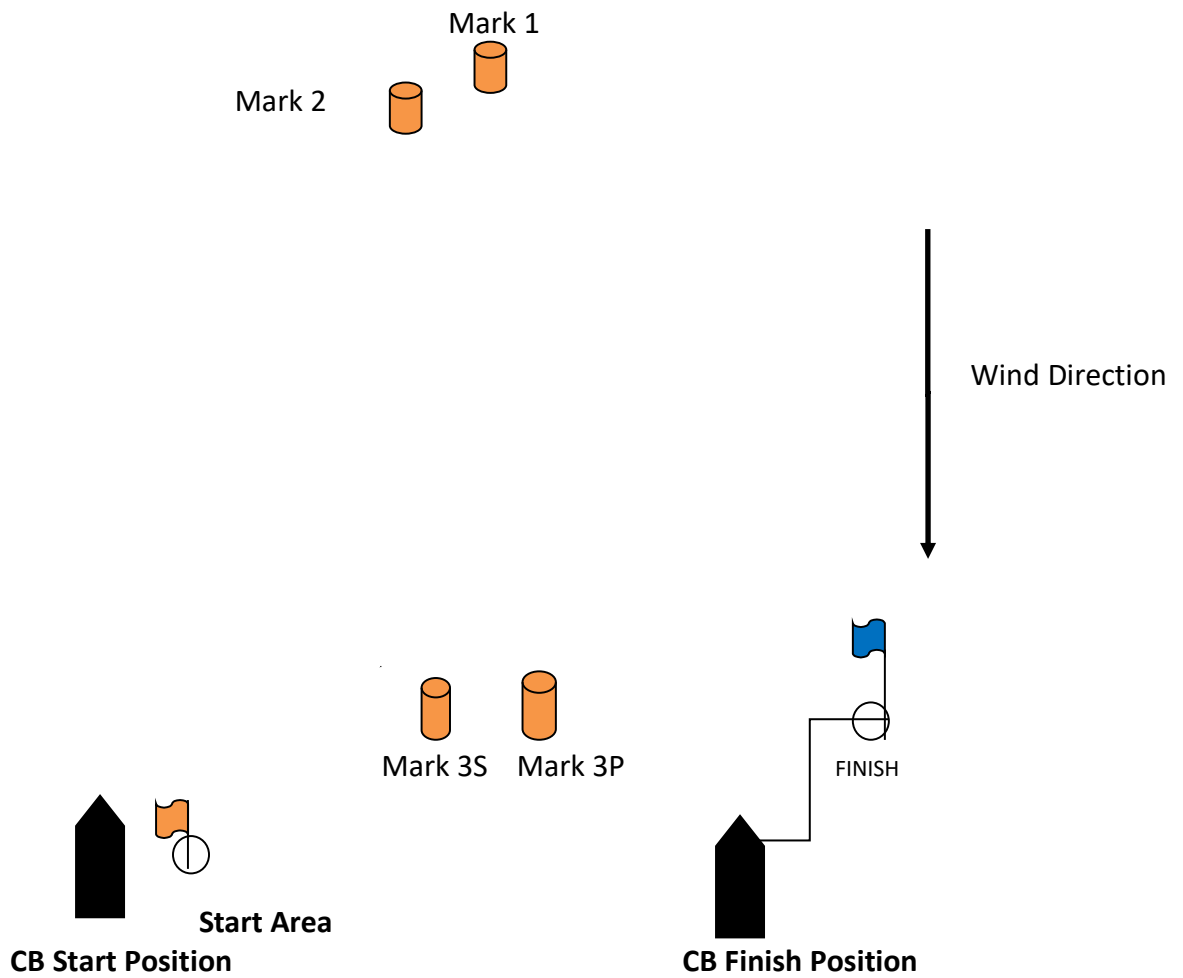
The procedure for the gate start is as follows:

- a) **Starting Area:** The committee boat will be in the starting area, which will be to leeward of the course. The port limit mark (white dan buoy with orange flag) will be laid at the leeward end of the gate.
- b) **Distinguishing Flags & Signals:** The committee boat and gate launch will display flag G. The guard launch will display flag U. The starting signals will be made from the committee boat.
- c) **Selection of Pathfinder:** The race committee will nominate the pathfinder and a reserve pathfinder for the first race. Subsequently, the pathfinder will be the tenth boat in the preceding race. When she is unable to race, or has been the pathfinder previously in the event, the pathfinder will be the eleventh boat in the preceding race and so on. The reserve pathfinder will be the next boat in the previous race. The sail numbers of pathfinder and reserve for the first race of each day will be posted on the official notice board, and will be displayed on the side of the committee boat at least 10 minutes before the preparatory signal for the first race. If more than one race is sailed on the same day, the numbers will be displayed on the side of the committee boat at least 10 minutes before the preparatory signal for each successive race. The pathfinder and reserve shall report to the committee boat as soon as possible after her number is displayed and before the preparatory signal. A pathfinder or reserve that fails to report will be scored Did Not Start. This changes RRS A4 and A5.
- (d) **Positioning of Pathfinder, Gate Launch and Guard Launch:** At or up to 15 seconds before the starting signal the pathfinder shall commence her close-hauled port tack from within one boat length of the port limit mark, leaving the mark to port, followed by the gate launch which will keep close astern of her. If the pathfinder is unable to do this, the race committee will signal a general recall. The guard launch will protect the pathfinder and will keep station off her starboard bow.
- (e) **Starting Line:** The starting line for all boats except the pathfinder will be between the port limit mark and the centre of the stern of the gate launch.
- (f) **Pathfinder Course:** The approximate time that the gate launch will be in motion along the port tack course after the starting signal will be displayed on the starboard side of the committee boat before the warning signal. The pathfinder shall maintain her close-hauled course until she is released by a hail from the gate launch, and may tack onto starboard. After releasing the pathfinder, the gate launch and guard launch will maintain their course and speed. At the end of the period of time displayed on the committee boat (which may be extended at the discretion of the race committee) the gate launch will stop, lower flag G half way with a sound, and drift for at least one minute. Flag G will then be fully lowered with a sound to indicate the closing of the gate. No boat shall start after the gate start line is closed.
- (g) **Starting:** Boats other than the Pathfinder shall start by crossing the starting line on starboard tack after the starting signal and before the gate closes.
- (h) A boat that has not already started correctly, and that is on the course side of the gate launch while the gate is open, shall not cross the starting line from the course side.
- (i) **Interference with Pathfinder, Gate Launch and Guard Launch:** After the preparatory signal, a boat shall not threaten the unobstructed sailing of the pathfinder, and shall not interfere with or try to pass between the pathfinder and the gate launch or guard launch, or cause another boat to interfere in these ways.
- (j) If a boat infringes instructions (h) or (i) and is identified, she will be disqualified without a hearing, even if the race is restarted, re-sailed, or rescheduled. If a general recall is signalled or the race is abandoned after the starting signal, the race committee will display her sail number before the next warning signal for that race, and if the race is restarted or re-sailed she shall not sail in it. If she does so her disqualification after the starting signal, the race committee will display her sail number before the next warning signal for that race, and if the race is restarted or re-sailed she shall not sail in it. If she does so her disqualification will not be excluded in calculating her series score. This changes RRS 36 and 63.1.
- (k) A boat that cannot avoid touching a starting mark may hail a right-of-way boat for room and shall retire.

# GATE START LAYOUT



**Appendix C  
Course**



Not to scale

<b>Marks 1,3S &amp; 3P</b>	<b>5ft Orange Inflatable Buoys</b>
<b>Mark 2</b>	<b>2ft Orange Inflatable Buoy</b>
<b>Change of Course Mark</b>	<b>5ft Yellow Inflatable Buoy</b>
<b>Start Mark</b>	<b>White Dan Buoy with Orange Flag</b>
<b>Finish Mark or Boat</b>	<b>White Dan Buoy with Blue Flag or Boat with Blue Flag</b>

1. Order of rounding Marks.

Round 1. Start to Mark 1 to Pt to Mk2 to Pt to Gate Marks 3S & 3P.

Round 2 Mark 1 to Pt to Mk2 to Pt to Gate Marks 3S & 3P.

And subsequent Rounds.

Last Round leave Mark 3P to Port and proceed to Finish.